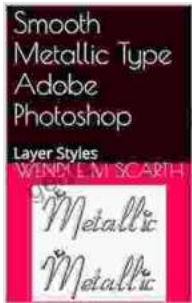


Smooth Metallic Type in Adobe Photoshop: A Comprehensive Guide



Smooth Metallic Type Adobe Photoshop: Layer Styles (Adobe Photoshop Made Easy by Wendi E M Scarth Book 78)

★★★★★ 5 out of 5

Language : English
File size : 1890 KB
Text-to-Speech : Enabled
Screen Reader : Supported
Enhanced typesetting : Enabled
Print length : 10 pages
Lending : Enabled



Welcome to the world of metallic typography, where text transforms into lustrous, shimmering masterpieces. In this comprehensive guide, we will embark on a journey to explore the secrets of creating smooth metallic type effects in Adobe Photoshop. Whether you're a seasoned graphic designer or just starting out, this tutorial will provide you with the essential techniques and step-by-step instructions to achieve stunning results.

1. Preparation: Setting the Stage



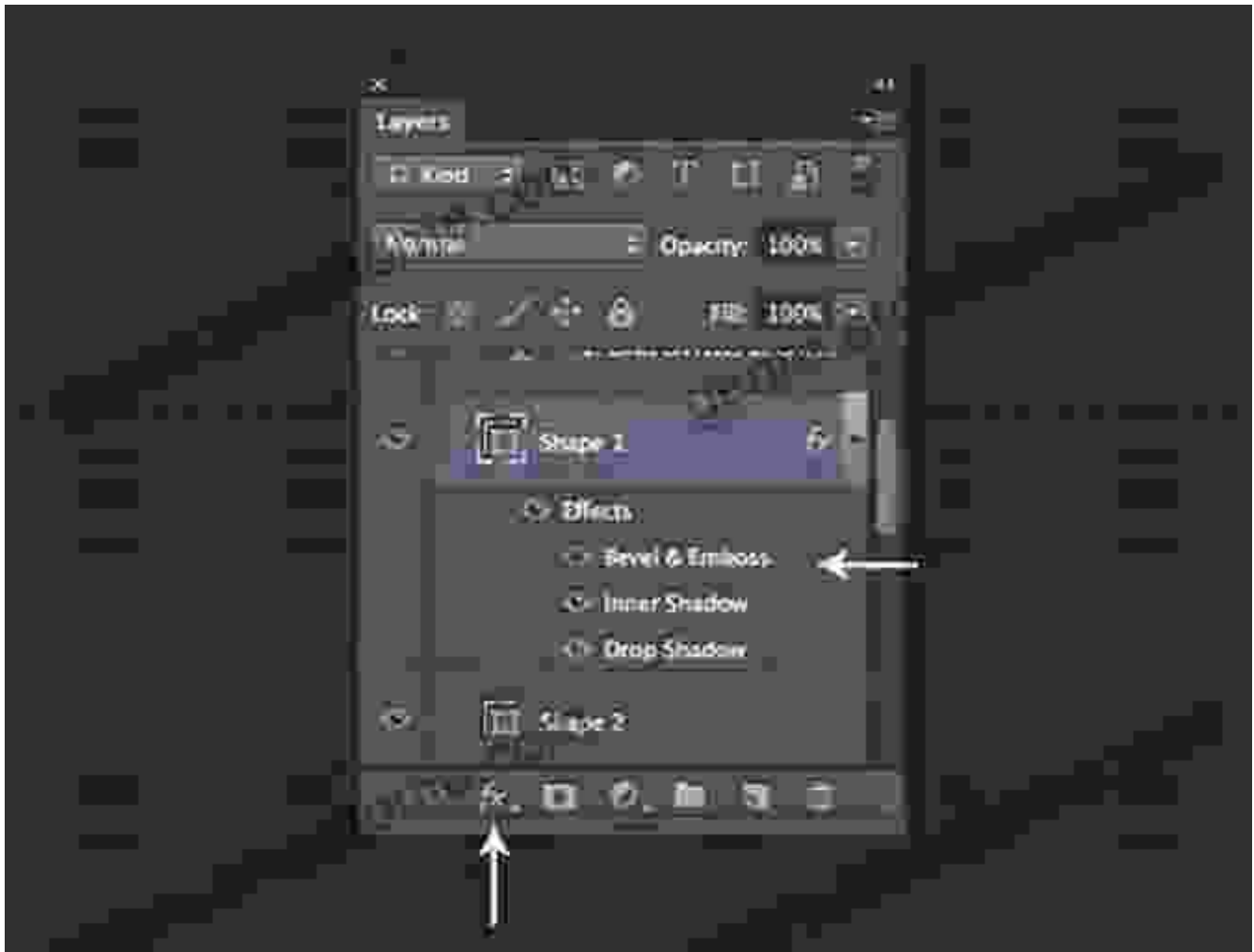
1. Create a new document in Photoshop with the desired dimensions.
2. Fill the background layer with a dark color to enhance the metallic effect.
3. Add a new layer for your text.

2. Creating the Metallic Base



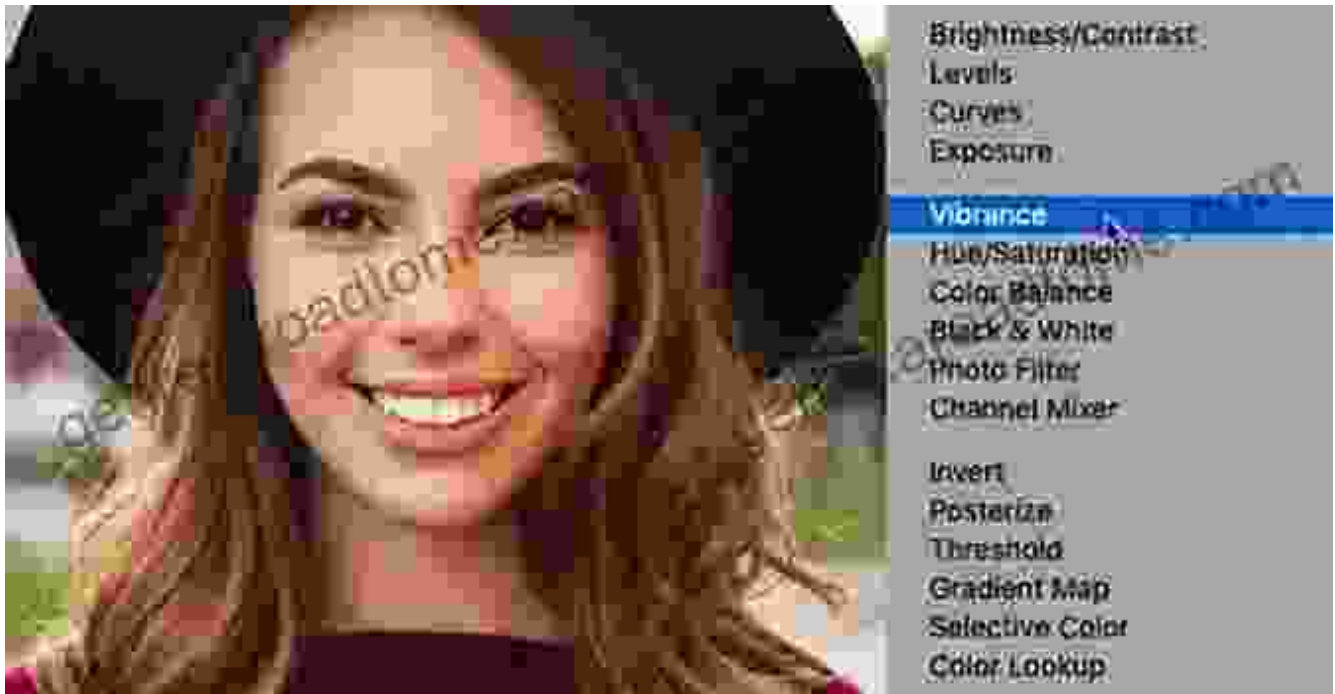
1. Select the text layer and create a gradient fill on the layer style.
2. Use a dark metallic color for the bottom stop and a lighter metallic color for the top stop.
3. Apply a drop shadow to the text to create depth.

3. Adding Highlights and Reflections



1. Duplicate the text layer and rasterize it.
2. Apply a layer style to create a bevel and emboss effect.
3. Use the eraser tool to remove the unwanted parts of the bevel, leaving only the highlights and reflections.

4. Enhancing the Shine



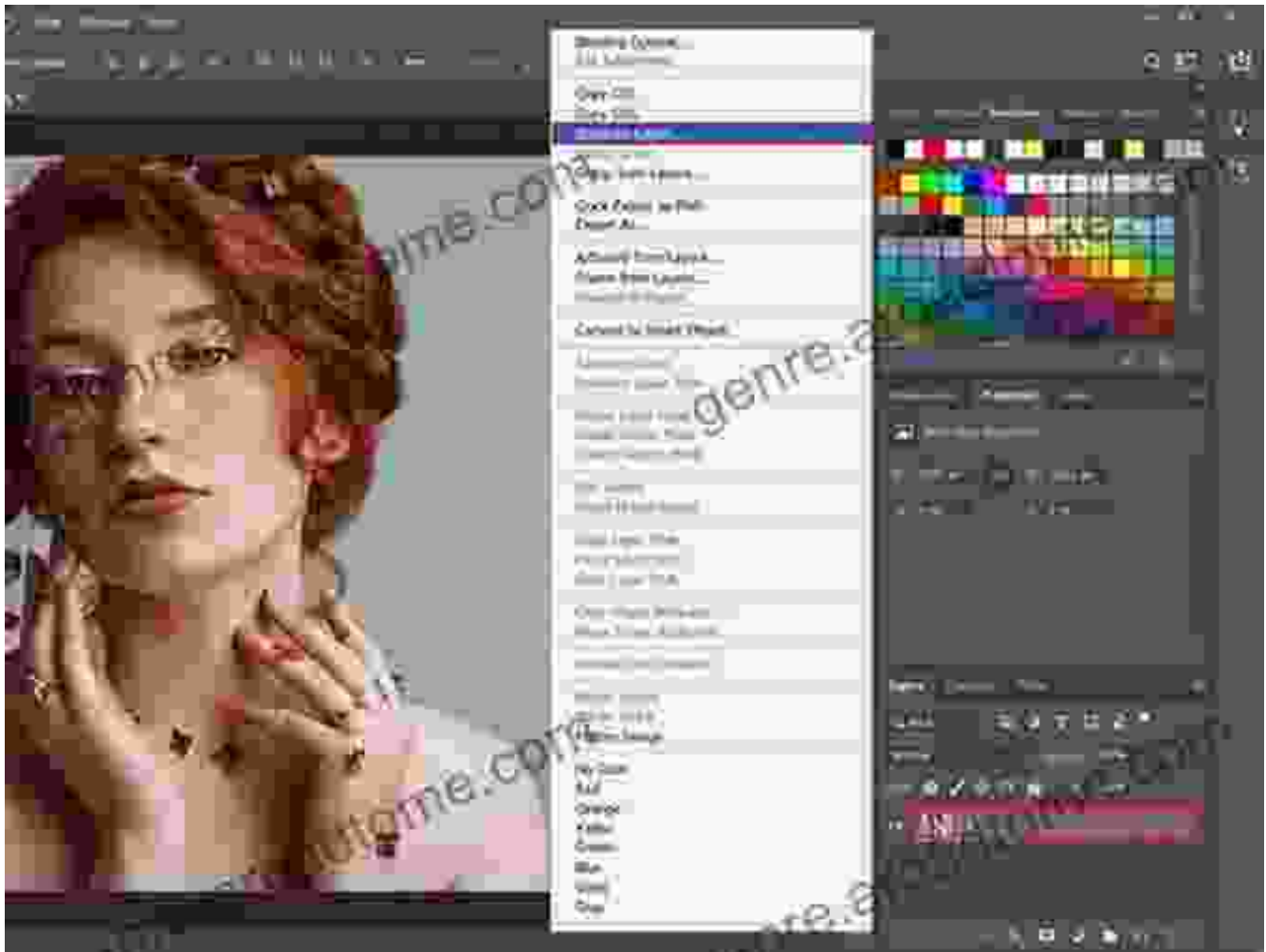
1. Create a new layer and fill it with a gradient from white to transparent.
2. Set the layer blending mode to "Overlay" to add shine to the metallic surface.
3. Use an adjustment layer to adjust the contrast and vibrance of the metallic effect.

5. Adding Texture and Detail



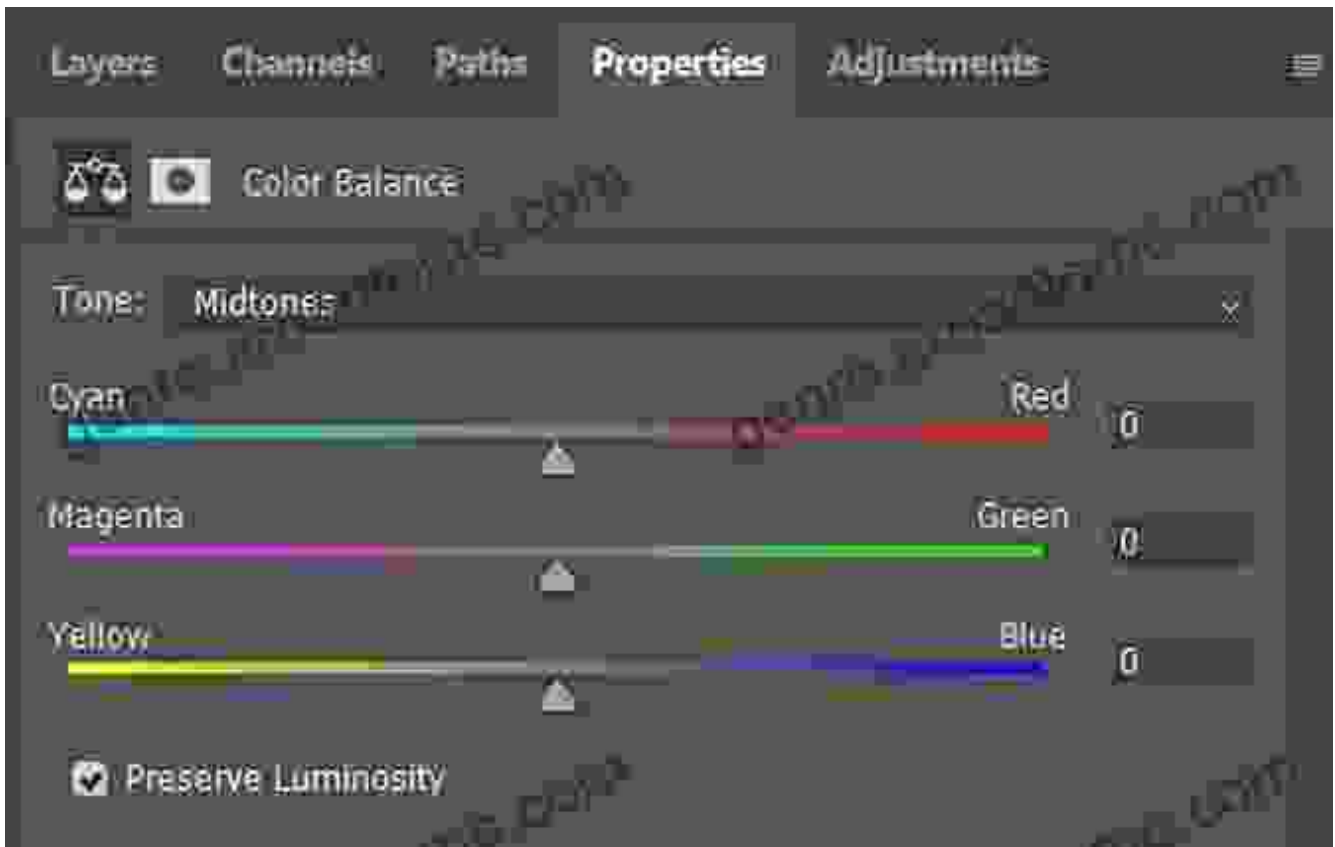
1. Apply a texture overlay to the metallic layer to add depth and realism.
2. Create a new layer and fill it with a low opacity grayscale noise.
3. Set the layer blending mode to "Multiply" to add subtle detail and imperfections to the metallic surface.

6. Refining the Edges



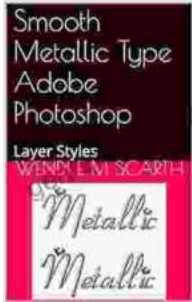
1. Duplicate the metallic layer and create a layer mask.
2. Use a soft brush to refine the edges of the metallic area.
3. Apply the Refine Edge Tool to further enhance the edge quality.

7. Final Touches and Adjustments



1. Apply a drop shadow to the entire metallic object to create a sense of grounding.
2. Use the Color Balance adjustment layer to fine-tune the overall color and temperature of the metallic effect.
3. Make any final adjustments to the brightness, contrast, and saturation to achieve your desired result.

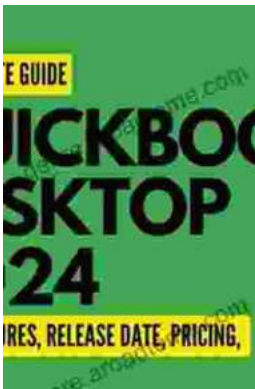
Congratulations on mastering the art of creating smooth metallic type in Adobe Photoshop! By following these step-by-step instructions and understanding the underlying techniques, you can now transform your typographic creations into eye-catching metallic masterpieces. Whether you're designing logos, posters, or website elements, the ability to create stunning metallic type will elevate your designs to new heights.



Smooth Metallic Type Adobe Photoshop: Layer Styles (Adobe Photoshop Made Easy by Wendi E M Scarth Book 78)

★★★★★ 5 out of 5

Language : English
File size : 1890 KB
Text-to-Speech : Enabled
Screen Reader : Supported
Enhanced typesetting : Enabled
Print length : 10 pages
Lending : Enabled



QuickBooks 2024 In Depth: Your Essential Guide to Accounting Mastery

About the Book Are you ready to elevate your accounting skills and unlock the full potential of QuickBooks 2024? Look no further than "QuickBooks 2024 In Depth," the...



Unlocking the Mysteries of Primitive Economies: A Journey into 'Economics in Primitive Communities'

Prepare to embark on an extraordinary intellectual adventure as we delve into the captivating realm of primitive economics with 'Economics in Primitive...

